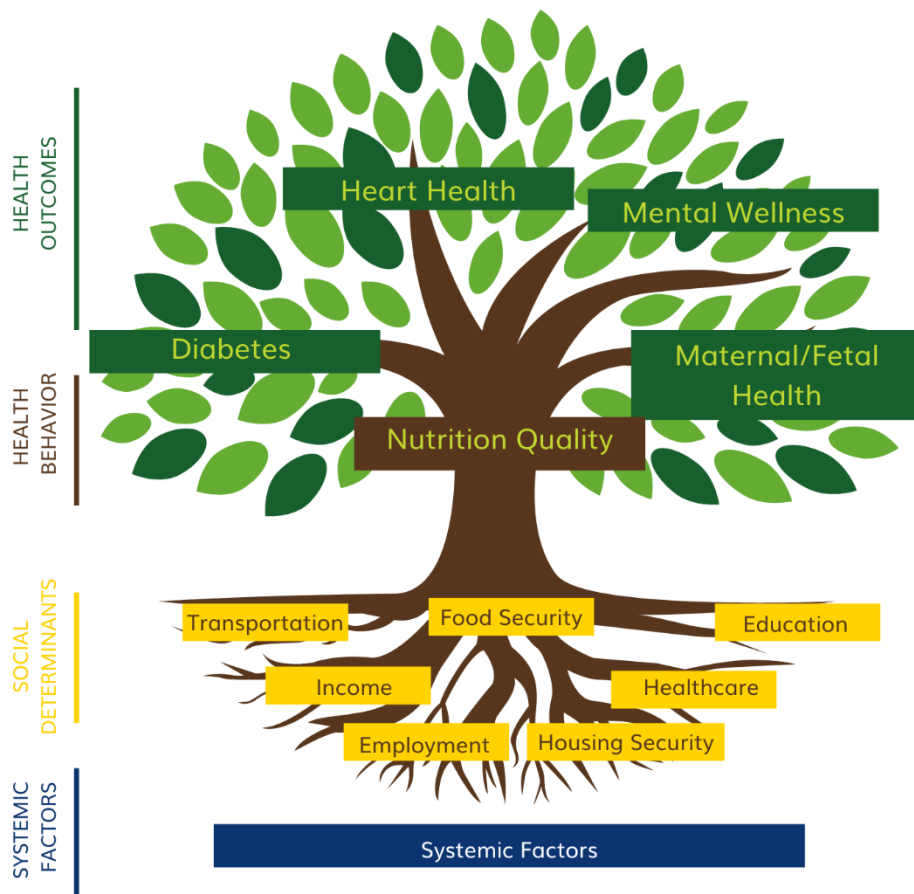


Common Metrics

Framework

Health and Hunger Task Force Common Metrics





Population Level Indicators

Contents

Population Level Indicators: Purpose.....	2
Population Level Indicators: Summary Crosswalk to Ladder.....	3
Population Level Indicators: Detailed Overview	7
Health Conditions	7
Health Behaviors	9
Nutrition Quality	9
Social Determinants of Health.....	9

Population Level Indicators: Purpose

Population level indicators will allow the HHTF to specify data points to monitor changes and trends in health outcomes and health related needs at a community level, as it relates to nutrition/food security, the focus of the HHTF.

Population level metrics will primarily be determined to gauge community trends. However, further analysis may also lead to sub indicators of more specific population groups, such as breakouts by age, race/ethnicity, gender, etc. Population level indicators will also be analyzed to identify geographic areas of priority for HHTF related initiatives.

Population level metrics will be made available in Ladder and updated as new data becomes available. HHTF membership will review population level indicators on an annual basis.

Population Level Indicators: Summary Crosswalk to Ladder

Topic Area	Indicator	Source	Ladder Name
Health Conditions			
Diabetes	Diagnosed diabetes among adults	CDC Places	Geography: County, Zip Code, Census Category: Health Name: Diagnosed diabetes among adults 2022 CDC
	Hospitalizations from diabetes	Florida Agency for Health Care Administration (AHCA)	Geography: County Category: Health Name: DiabetesHospRates 2024 FLCharts
Heart Health	Prevalence of high blood pressure in adults	CDC Places	Geography: County, Zip Code, Census Category: Health High Blood Pressure Among Adults 2020 CDC
	Hospitalization from or with congestive heart failure as any listed diagnosis	Florida Agency for Health Care Administration (AHCA)	Geography: County Category: Health Name: CongestiveHeartFailureHospitalizations 2024FLCharts

Maternal/Fetal Health	Gestational diabetes during pregnancy	FL Charts Pregnancy Risk Assessment Monitoring System (PRAMS)	<i>Pending Upload</i>
	Preterm births (<37 weeks gestation)	Florida Department of Health, Bureau of Vital Statistics	Geography: County Category: Health Name: PretermBirthPercentage All – 2024 FL Charts Additional Demographics: Race/Ethnicity (White, Black, Hispanic, Other)
Mental Wellness	Frequent Mental Distress Among Adults	CDC Places	Geography: Census (<i>Other geographies pending upload</i>) Category: Health Name: MentalDistress2025CDCPlaces
Health Behaviors			
Nutrition Quality	Adults Who Consumed Two or More Servings of Vegetables per Day	Florida Behavioral Risk Factor Surveillance System telephone survey	Geography: County Category: Nutrition Name: TwoOrMoreVeg Servings 2019 FLCharts
Social Determinants of Health			
Food Security	Food Insecurity Rate	Feeding America, Map the Meal Gap	Geography: County, Zip Code, Census

			<p>Category: Nutrition</p> <p>Name: FL Food Insecurity Rate 2023 Feeding America</p> <p>Additional Demographics: Children, Race/Ethnicity (Black/White/Hispanic persons)</p>
Transportation	Lack of reliable transportation in 12 months	CDC Places	<p>Geography: County, Zip Code, Census</p> <p>Category: Housing and Transit</p> <p>Name: Lack of reliable transportation in 12 months among adults 2022 CDC</p>
Employment	Unemployment Rate, Percent of Workforce	United States Department of Labor, Bureau of Labor Statistics via FL Charts	<p>Geography: County, Zip Code, Census</p> <p>Category: Population</p> <p>Name: Unemployment 2024 FLCharts</p>
Income	Percent of households at or above poverty	US Census Bureau	<p>Geography: County, Zip Code, Census</p> <p>Category: Population</p> <p>Name: Percent households with poverty status at or above poverty level</p>
Healthcare	Current lack of health insurance among adults	CDC Places	<p>Geography: County, Zip Code, Census</p> <p>Category: Health</p> <p>Name: Current lack of health insurance among adults aged 18-64 years 2022 CDC</p>

Housing Insecurity	Housing insecurity in the past 12 months among adults	CDC Places	Geography: County, Zip Code, Census Category: Housing and Transit Name: Housing insecurity in the past 12 months among adults 2022 CDC
Education	High School Graduation Rate	Florida Department of Education (DOE) via FL Charts	<i>Pending Upload</i>

Population Level Indicators: Detailed Overview

Health Conditions

Diabetes

- Dataset: Prevalence: **Diagnosed diabetes among adults**
 - Source: CDC Places Data (utilizing data from BRFSS, ACS, and Census)
 - Source Website: [Health Outcomes | PLACES | CDC](#)
 - Geography: County, Zip Code, Census tract
 - Publicly available in Ladder
 - Definition: Model-based estimates of diagnosed diabetes prevalence among adults aged 18 years and older
- Dataset: **Hospitalizations from diabetes (Age Adjusted)**
 - Source: Florida Agency for Health Care Administration (AHCA) via Florida Charts
 - Source Website: [Hospitalizations From Diabetes | FLHealthCHARTS.gov - Florida Department of Health](#)
 - Geography: County
 - Available in HHTF Ladder Team
 - Definition: Inpatient hospitalizations, discharged from civilian, non-federal hospitals located in Florida, where diabetes was the principal diagnosis.

Heart Health

- Dataset: **Prevalence of high blood pressure in adults**
 - Source: CDC Places Data (utilizing data from BRFSS, ACS, and Census)
 - Source Website: [Health Outcomes | PLACES | CDC](#)
 - Geography: County, Zip Code, Census tract
 - Publicly available in Ladder
 - Definition: Model-based estimates of high blood pressure prevalence among adults aged 18 years and older
- Dataset: **Hospitalization from or with congestive heart failure (CHF) as any listed diagnosis (Age Adjusted)**
 - Source: Florida Agency for Health Care Administration (AHCA) via Florida Charts
 - Source Website: [Hospitalizations From or With Congestive Heart Failure as Any Listed Diagnosis | FLHealthCHARTS.gov - Florida Department of Health](#)
 - Smallest Geographic Level: county

- Available in HHTF Ladder Team
- Definition: Inpatient hospitalizations, discharged from civilian, non-federal hospitals located in Florida, where congestive heart failure was the principal diagnosis.

Maternal/Fetal health

- Dataset: **Gestational diabetes during pregnancy**
 - Source: FL Charts Pregnancy Risk Assessment Monitoring System (PRAMS)
 - [Pregnancy Risk Assessment Monitoring System \(PRAMS\): During Pregnancy | FLHealthCHARTS.gov - Florida Department of Health](#)
 - Geography: State Level
 - Not yet uploaded in Ladder, HHTF to make a request for County/Zip Code Level data
 - Definition: Women told by a healthcare provider that they had gestational diabetes that started during the current pregnancy
- Dataset: **Preterm births (<37 weeks gestation)**
 - Source: Florida Department of Health, Bureau of Vital Statistics via Florida Charts
 - Source Website: [Preterm Births \(<37 Weeks Gestation\) | FLHealthCHARTS.gov - Florida Department of Health](#)
 - Geography: County
 - Available in HHTF Ladder Team
 - Definition: A preterm birth is the early birth of a live baby, defined as less than 37 weeks of gestation. It may be expressed as a percentage of births.

Mental Wellness

- Dataset: **Frequent Mental Distress Among Adults**
 - Source: CDC Places Data (utilizing data from BRFSS and ACS)
 - Source Website: [Health Status | PLACES | CDC](#)
 - Geography: Census Tract
 - Available in HHTF Ladder Team
 - Definition: Prevalence of frequent mental distress (FMD) is defined as 14 or more mentally unhealthy days during the past 30 days where the person has experienced poor mental health because of stress, depression, or problems with emotions.

Health Behaviors

Nutrition Quality

- Dataset: **Adults Who Consumed Two or More Servings of Vegetables per Day**
 - Source: Florida Behavioral Risk Factor Surveillance System telephone survey conducted by the Centers for Disease Control and Prevention (CDC) and Florida Department of Health Division of Community Health Promotion.
 - Source Website: [Behavioral Risk Factor Surveillance System \(BRFSS\) Dashboard | FLHealthCHARTS.gov - Florida Department of Health](#)
 - Geography: County
 - Definition: Adults Who Consumed Two or More Servings of Vegetables per Day

Social Determinants of Health

Food Security

- Dataset: **Food Insecurity Rate**
 - Source: Feeding America, Map the Meal Gap
 - Source Website: [Hunger & Poverty in the United States | Map the Meal Gap](#)
 - Geography: County, Zip Code, Census Tract
 - Publicly available in Ladder
 - Definition: Percentage of inhabitants who are food insecure

Transportation

- Dataset: **Lack of reliable transportation in last 12 months among adults (Prevalence, crude)**
 - Source: CDC Places (utilizing data from BRFSS, ACS, and Census)
 - Source Website: [Health-Related Social Needs | PLACES | CDC](#)
 - Geography: County, Zip Code, Census Tract
 - Publicly available in Ladder
 - Definition: A multi-level regression and post-stratification approach was applied to BRFSS and ACS data to compute a detailed probability among adults who reported a lack of reliable transportation keeping them from medical appointments, meetings, work, or from getting things needed for daily living in the past 12 months.

Employment

- Dataset: **Unemployment Rate, Percent of Workforce**
 - Source: United States Department of Labor, Bureau of Labor Statistics (BLS) via Florida Charts
 - Source Website: [Unemployment Rate | FLHealthCHARTS.gov - Florida Department of Health](#)
 - Geography: County
 - Available in HHTF Ladder Team
 - Definition: The ratio of unemployed to the civilian labor force, expressed as a percent.

Income

- Dataset: **Percent of households at or above poverty**
 - Source: US Census Bureau
 - Source Website: [Poverty in the United States: 2024](#)
 - Geography: County, Zip Code, Census Tract
 - Publicly Available in Ladder
 - Definition: The ratio of unemployed to the civilian labor force, expressed as a percent.

Healthcare

- Dataset: **Current lack of health insurance among adults aged 18–64 years (Prevalence, crude)**
 - Source: CDC Places (utilizing data from BRFSS, ACS, and Census)
 - Source Website: [Prevention | PLACES | CDC](#)
 - Geography: County, Zip Code, Census Tract
 - Publicly available in Ladder
 - Definition: A multilevel regression and post-stratification approach was applied to BRFSS and ACS data to compute a detailed probability among adults aged 18–64 who report having no current health insurance coverage.

Housing Insecurity

- Dataset: **Housing insecurity in the past 12 months among adults (Prevalence, Crude)**
 - Source: CDC Places (utilizing data from BRFSS, ACS, and Census)
 - Source Website: [Health-Related Social Needs | PLACES | CDC](#)
 - Smallest Geographic Level: Census Tract
 - Geography: County, Zip Code, Census Tract
 - Definition: A multi-level regression and post-stratification approach was applied to BRFSS and ACS data to compute a detailed probability among adults who were not able to pay mortgage, rent, or utility bill in the past 12 months.

Education

- Dataset: **High School Graduation Rate**
 - Source: Florida Department of Education (DOE) via Florida Charts
 - Source Website: [High School Graduation Rate | FLHealthCHARTS.gov - Florida Department of Health](#)
 - Smallest Geographic Level: County
 - Available in HHTF Ladder Team
 - Definition: The percentage of students who graduated with a standard diploma within four years of their initial enrollment in ninth grade.